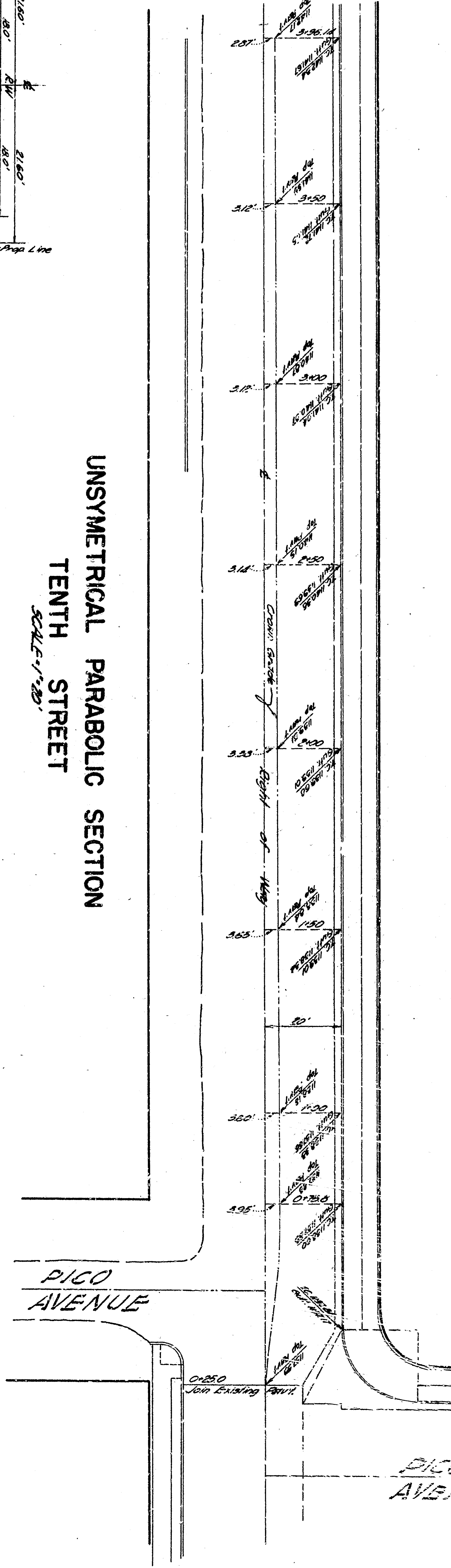
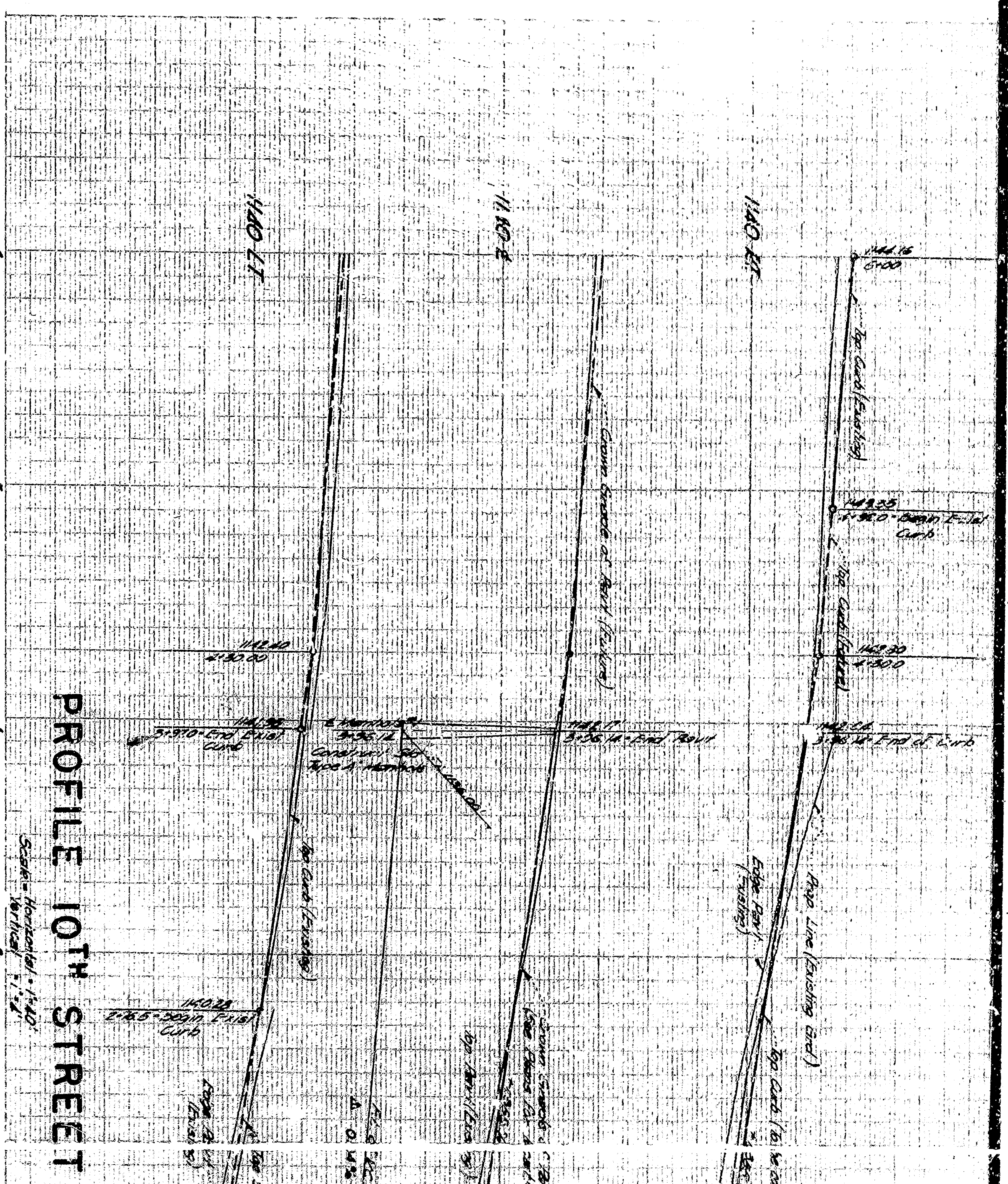


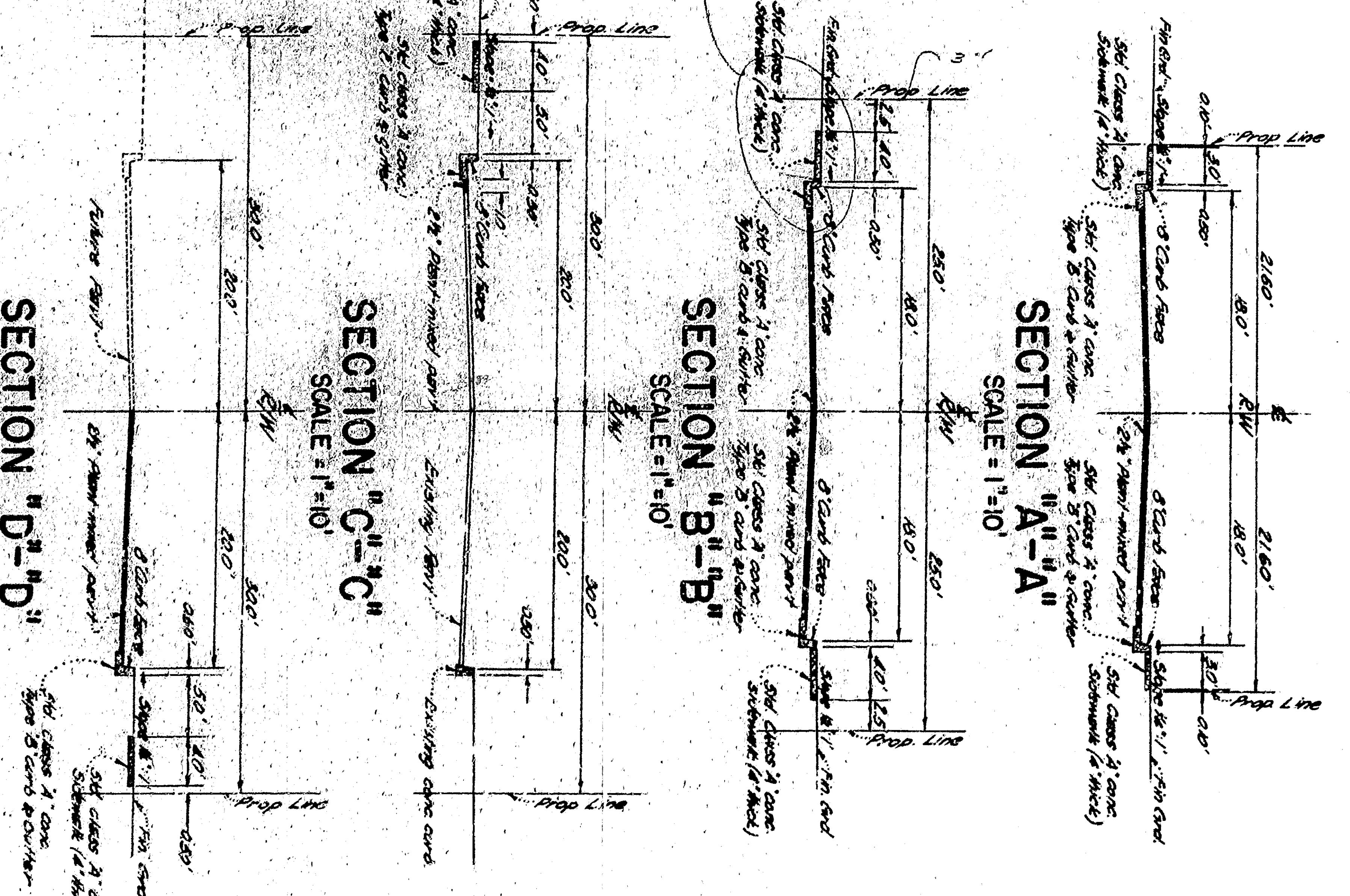
UNSYMMETRICAL PARABOLIC SECTION
OLIVE STREET
SCALE: 1/8"



UNSYMMETRICAL PARABOLIC SECTION
TENTH STREET
SCALE: 1/8"



PROFILE 10TH STREET
SCALE: 1/4"

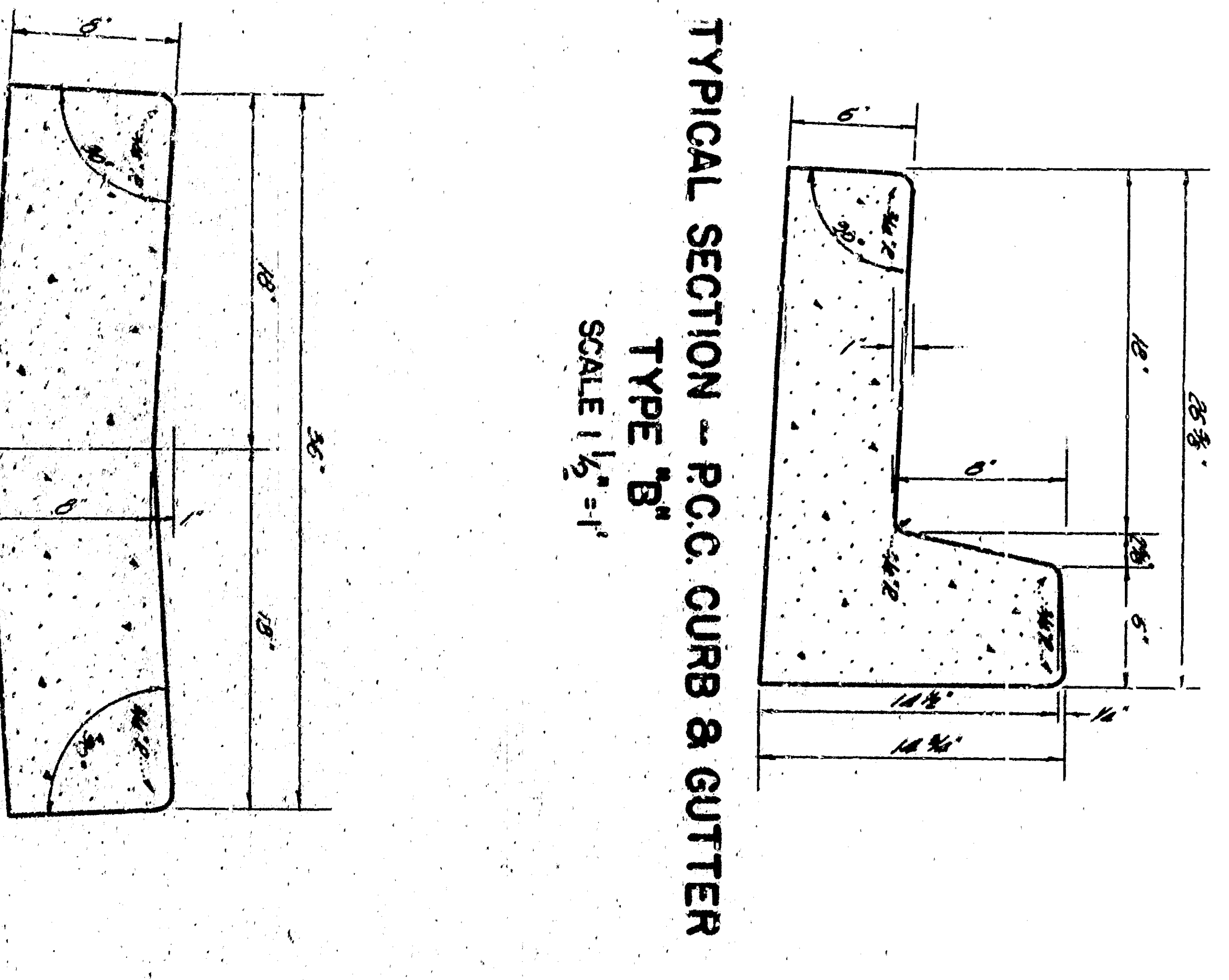


SECTION "A-A"
SCALE: 1/4"

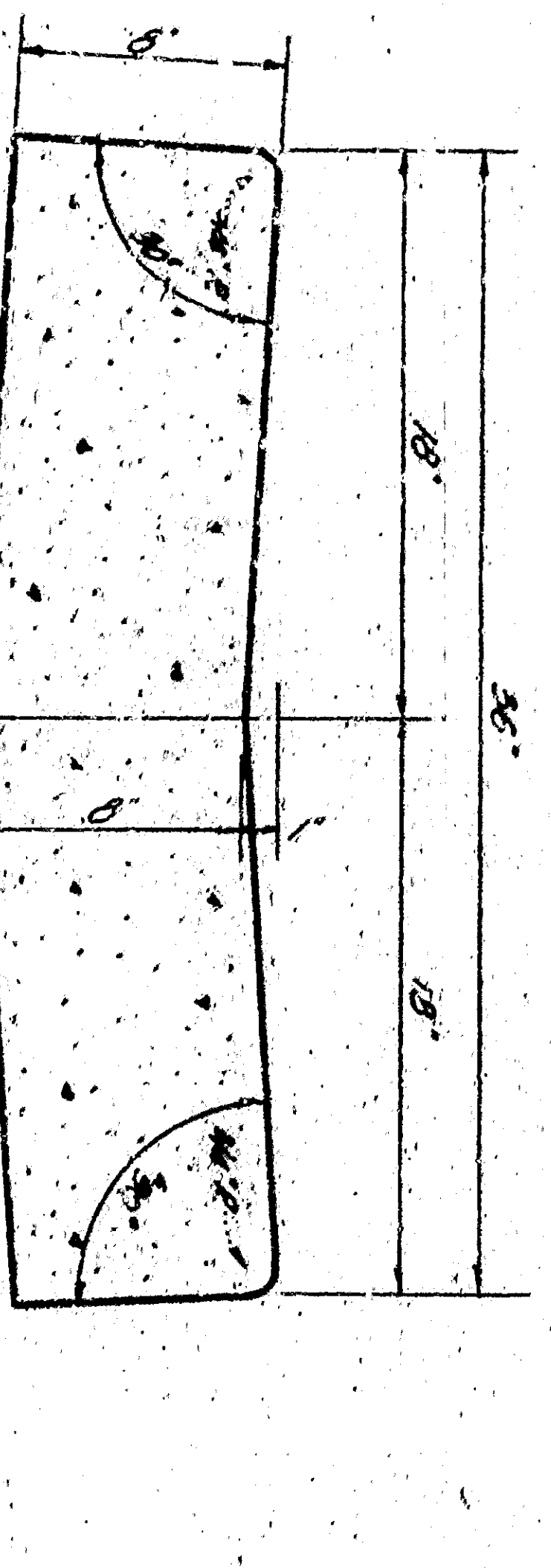
SECTION "B-B"
SCALE: 1/4"

SECTION "C-C"
SCALE: 1/4"

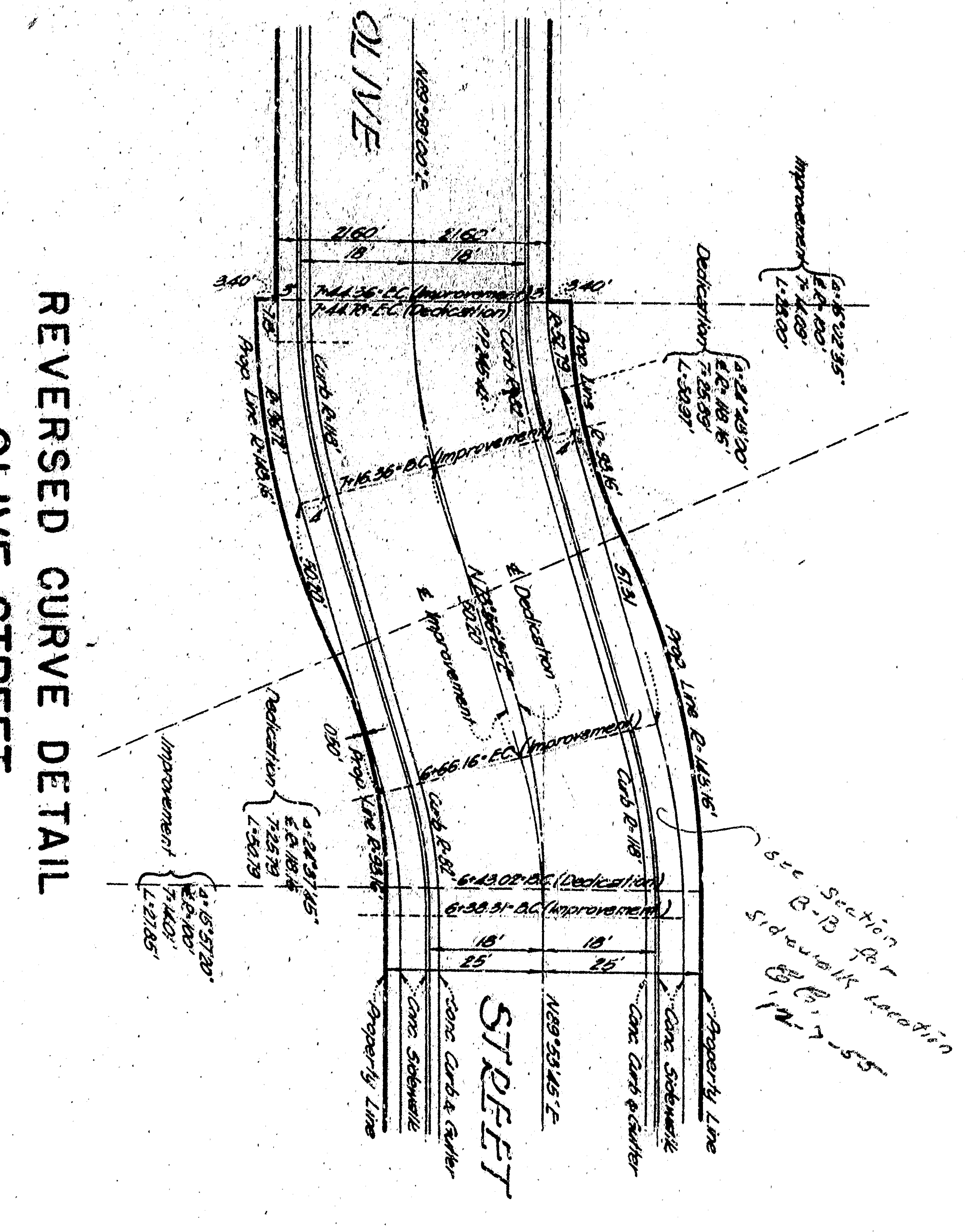
SECTION "D-D"
SCALE: 1/4"



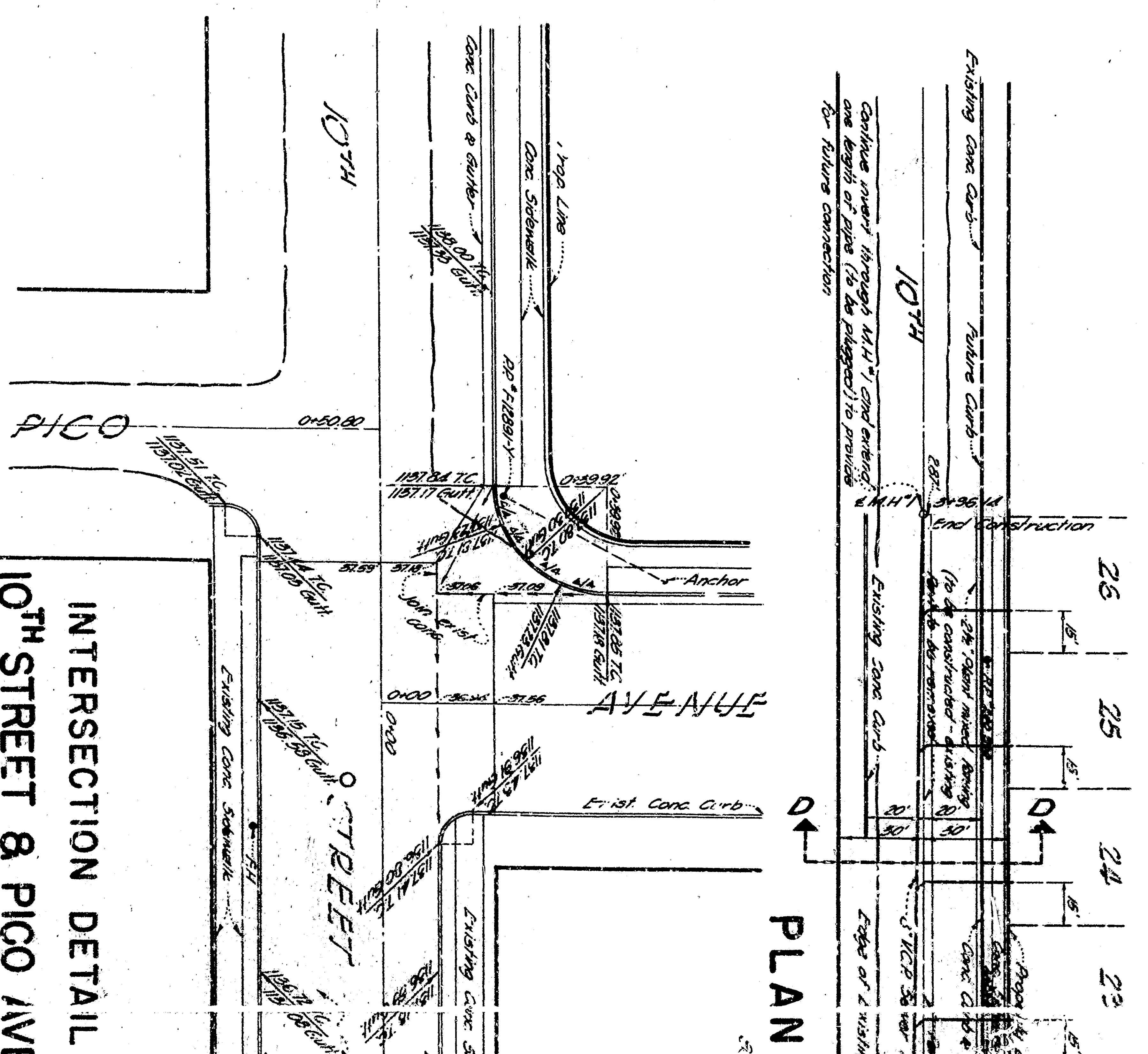
TYPICAL SECTION - P.C.C. CURB & GUTTER
TYPE "B"
SCALE: 1 1/2"



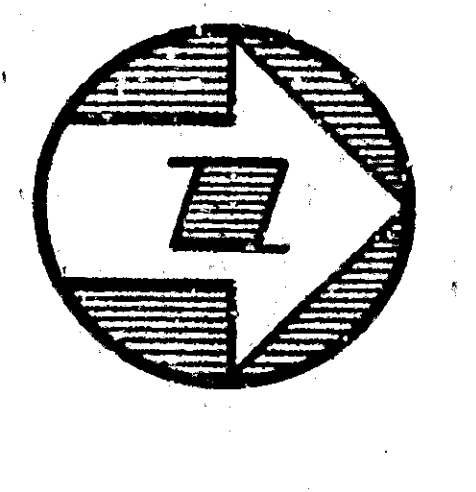
TYPICAL SECTION - 3' P.C.C. CROSS GUTTER
TYPE "D"
SCALE: 1 1/2"



REVERSED CURVE DETAIL
OLIVE STREET
SCALE: 1/8"



INTERSECTION DETAIL
10TH STREET & PICO AVE
SCALE: 1/8"



NOTE: 1. All P.C.C. shall be 3000 psi concrete with 4% minimum air content. 2. All concrete shall be finished with a smooth, troweled surface. 3. All concrete shall be cured for a minimum of 7 days. 4. All concrete shall be tested for strength and air content. 5. All concrete shall be placed and finished in accordance with the specifications of the Department of Public Works. 6. All concrete shall be placed and finished in accordance with the specifications of the Department of Public Works. 7. All concrete shall be placed and finished in accordance with the specifications of the Department of Public Works. 8. All concrete shall be placed and finished in accordance with the specifications of the Department of Public Works. 9. All concrete shall be placed and finished in accordance with the specifications of the Department of Public Works. 10. All concrete shall be placed and finished in accordance with the specifications of the Department of Public Works.

RESIGNED CIVIL ENGINEER IN SAN FRANCISCO